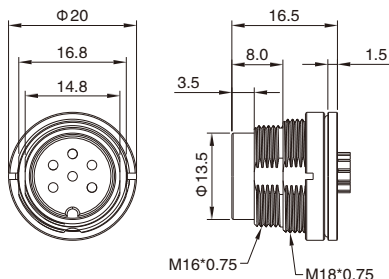


M16 Male Panel Mount, Die-cast Screw, Solder, Front fastened

- Connector series: M16
- Gender: Male
- Locking type: Fix screw
- Mounting type: Front fastened
- Part No.: MB16MSAFHD**ST-6

** refers to pins number



RoHS

General information

Standard:	IEC 61076-2-106
Ambient temperature:	-25°C ~ +70°C
Connector insert:	BPT
Connector contacts:	Brass with gold plated
Connector screw/body:	Zinc alloy with nickel plated
Coupling screw:	Brass with nickel plated

Seal/ O-ring:	NBR/FKM
Insulation resistance:	≥ 100MΩ
Contact resistance :	≤ 5mΩ
Shielding:	Unavailable
IP rating:	IP65, IP67 in locked condition
Mating endurance:	>100 cycles

Electrical data & Mechanical data

Contacts	Contact termination	Rated current	Voltage		Wire gauge / size		Cable jacket	Part No.
			A/C	D/C	AWG	mm ²		
02 pins	Solder version	7A(40°C)	250V	32V	18AWG	0.75	PUR/PVC	MB16MSAFHD02ST-6
03 pins	Solder version	7A(40°C)	250V	32V	18AWG	0.75	PUR/PVC	MB16MSAFHD03ST-6
04 pins	Solder version	6A(40°C)	250V	32V	18AWG	0.75	PUR/PVC	MB16MSAFHD04ST-6
05 pins-a	Solder version	6A(40°C)	250V	32V	18AWG	0.75	PUR/PVC	MB16MSAFHD05AST-6
05 pins-b	Solder version	6A(40°C)	60V	32V	18AWG	0.75	PUR/PVC	MB16MSAFHD05BST-6
06 pins	Solder version	5A(40°C)	250V	32V	18AWG	0.75	PUR/PVC	MB16MSAFHD06ST-6
07 pins-a	Solder version	5A(40°C)	125V	32V	18AWG	0.75	PUR/PVC	MB16MSAFHD07AST-6
07 pins-b	Solder version	5A(40°C)	60V	32V	18AWG	0.75	PUR/PVC	MB16MSAFHD07BST-6
08 pins	Solder version	5A(40°C)	60V	32V	18AWG	0.75	PUR/PVC	MB16MSAFHD08ST-6
14 pins	Solder version	3A(40°C)	60V	32V	Max.24AWG	Max.0.25	PUR/PVC	MB16MSAFHD14ST-6
19 pins	Solder version	3A(40°C)	60V	32V	Max.24AWG	Max.0.25	PUR/PVC	MB16MSAFHD19ST-6

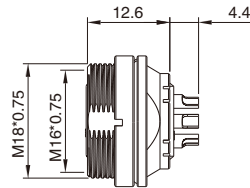
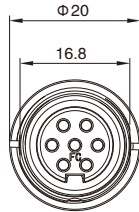
Remarks

- Please refer to Page 578 for the Conversion between American Wire Gauge AWG and Wire Cross-section mm².
- Please Refer to page 292 for products' part number encoding rule.

M16 Female Panel Mount, Die-cast Screw, Solder, Front fastened

- Connector series: M16
- Gender: Female
- Locking type: Fix screw
- Mounting type: Front fastened
- Part No.: MB16FSAFHD**ST-6

** refers to pins number



General information



Standard:	IEC 61076-2-106
Ambient temperature:	-25°C ~ +70°C
Connector insert:	BPT
Connector contacts:	Brass with gold plated
Connector screw/body:	Zinc alloy with nickel plated
Coupling screw:	Brass with nickel plated

Seal/ O-ring:	NBR/FKM
Insulation resistance:	≥ 100MΩ
Contact resistance :	≤ 5mΩ
Shielding:	Unavailable
IP rating:	IP65, IP67 in locked condition
Mating endurance:	>100 cycles

Electrical data & Mechanical data

Contacts	Contact termination	Rated current	Voltage		Wire gauge / size		Cable jacket	Part No.	
			A/C	D/C	AWG	mm ²			
02 pins		Solder version	7A(40°C)	250V	32V	18AWG	0.75	PUR/PVC	MB16FSAFHD02ST-6
03 pins		Solder version	7A(40°C)	250V	32V	18AWG	0.75	PUR/PVC	MB16FSAFHD03ST-6
04 pins		Solder version	6A(40°C)	250V	32V	18AWG	0.75	PUR/PVC	MB16FSAFHD04ST-6
05 pins-a		Solder version	6A(40°C)	250V	32V	18AWG	0.75	PUR/PVC	MB16FSAFHD05AST-6
05 pins-b		Solder version	6A(40°C)	60V	32V	18AWG	0.75	PUR/PVC	MB16FSAFHD05BST-6
06 pins		Solder version	5A(40°C)	250V	32V	18AWG	0.75	PUR/PVC	MB16FSAFHD06ST-6
07 pins-a		Solder version	5A(40°C)	125V	32V	18AWG	0.75	PUR/PVC	MB16FSAFHD07AST-6
07 pins-b		Solder version	5A(40°C)	60V	32V	18AWG	0.75	PUR/PVC	MB16FSAFHD07BST-6
08 pins		Solder version	5A(40°C)	60V	32V	18AWG	0.75	PUR/PVC	MB16FSAFHD08ST-6
14 pins		Solder version	3A(40°C)	60V	32V	Max.24AWG	Max.0.25	PUR/PVC	MB16FSAFHD14ST-6
19 pins		Solder version	3A(40°C)	60V	32V	Max.24AWG	Max.0.25	PUR/PVC	MB16FSAFHD19ST-6

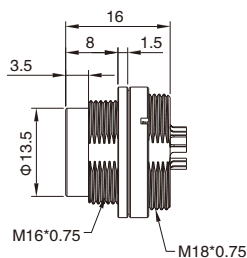
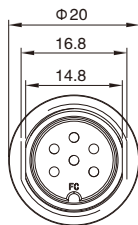
Remarks

- Please refer to Page 578 for the Conversion between American Wire Gauge AWG and Wire Cross-section mm².
- Please Refer to page 292 for products' part number encoding rule.

M16 Male Panel Mount, Die-cast Screw, Solder, Rear fastened

- Connector series: M16
- Gender: Male
- Locking type: Fix screw
- Mounting type: Rear fastened
- Part No.: MB16MSARHD**ST-6

** refers to pins number



RoHS

General information

Standard:	IEC 61076-2-106	Seal/ O-ring:	NBR/FKM
Ambient temperature:	-25°C ~ +70°C	Insulation resistance:	≥ 100MΩ
Connector insert:	BPT	Contact resistance :	≤ 5mΩ
Connector contacts:	Brass with gold plated	Shielding:	Unavailable
Connector screw/body:	Zinc alloy with nickel plated	IP rating:	IP65, IP67 in locked condition
Coupling screw:	Brass with nickel plated	Mating endurance:	>100 cycles

Electrical data & Mechanical data

Contacts	Contact termination	Rated current	Voltage		Wire gauge / size		Cable jacket	Part No.	
			A/C	D/C	AWG	mm ²			
02 pins		Solder version	7A(40°C)	250V	32V	18AWG	0.75	PUR/PVC	MB16MSARHD02ST-6
03 pins		Solder version	7A(40°C)	250V	32V	18AWG	0.75	PUR/PVC	MB16MSARHD03ST-6
04 pins		Solder version	6A(40°C)	250V	32V	18AWG	0.75	PUR/PVC	MB16MSARHD04ST-6
05 pins-a		Solder version	6A(40°C)	250V	32V	18AWG	0.75	PUR/PVC	MB16MSARHD05AST-6
05 pins-b		Solder version	6A(40°C)	60V	32V	18AWG	0.75	PUR/PVC	MB16MSARHD05BST-6
06 pins		Solder version	5A(40°C)	250V	32V	18AWG	0.75	PUR/PVC	MB16MSARHD06ST-6
07 pins-a		Solder version	5A(40°C)	125V	32V	18AWG	0.75	PUR/PVC	MB16MSARHD07AST-6
07 pins-b		Solder version	5A(40°C)	60V	32V	18AWG	0.75	PUR/PVC	MB16MSARHD07BST-6
08 pins		Solder version	5A(40°C)	60V	32V	18AWG	0.75	PUR/PVC	MB16MSARHD08ST-6
14 pins		Solder version	3A(40°C)	60V	32V	Max.24AWG	Max.0.25	PUR/PVC	MB16MSARHD14ST-6
19 pins		Solder version	3A(40°C)	60V	32V	Max.24AWG	Max.0.25	PUR/PVC	MB16MSARHD19ST-6

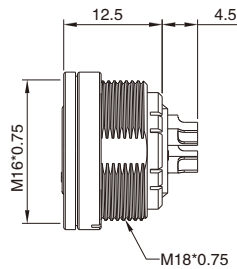
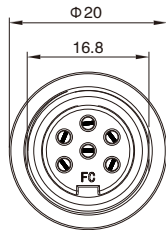
Remarks

- Please refer to Page 578 for the Conversion between American Wire Gauge AWG and Wire Cross-section mm².
- Please Refer to page 292 for products' part number encoding rule.

M16 Female Panel Mount, Die-cast Screw, Solder, Rear fastened

- Connector series: M16
- Gender: Female
- Locking type: Fix screw
- Mounting type: Rear fastened
- Part No.: MB16FSARHD**ST-6

** refers to pins number



General information



Standard:	IEC 61076-2-106
Ambient temperature:	-25°C ~ +70°C
Connector insert:	BPT
Connector contacts:	Brass with gold plated
Connector screw/body:	Zinc alloy with nickel plated
Coupling screw:	Brass with nickel plated

Seal/ O-ring:	NBR/FKM
Insulation resistance:	≥ 100MΩ
Contact resistance :	≤ 5mΩ
Shielding:	Unavailable
IP rating:	IP65, IP67 in locked condition
Mating endurance:	>100 cycles

Electrical data & Mechanical data

Contacts	Contact termination	Rated current	Voltage		Wire gauge / size		Cable jacket	Part No.	
			A/C	D/C	AWG	mm ²			
02 pins		Solder version	7A(40°C)	250V	32V	18AWG	0.75	PUR/PVC	MB16FSARHD02ST-6
03 pins		Solder version	7A(40°C)	250V	32V	18AWG	0.75	PUR/PVC	MB16FSARHD03ST-6
04 pins		Solder version	6A(40°C)	250V	32V	18AWG	0.75	PUR/PVC	MB16FSARHD04ST-6
05 pins-a		Solder version	6A(40°C)	250V	32V	18AWG	0.75	PUR/PVC	MB16FSARHD05AST-6
05 pins-b		Solder version	6A(40°C)	60V	32V	18AWG	0.75	PUR/PVC	MB16FSARHD05BST-6
06 pins		Solder version	5A(40°C)	250V	32V	18AWG	0.75	PUR/PVC	MB16FSARHD06ST-6
07 pins-a		Solder version	5A(40°C)	125V	32V	18AWG	0.75	PUR/PVC	MB16FSARHD07AST-6
07 pins-b		Solder version	5A(40°C)	60V	32V	18AWG	0.75	PUR/PVC	MB16FSARHD07BST-6
08 pins		Solder version	5A(40°C)	60V	32V	18AWG	0.75	PUR/PVC	MB16FSARHD08ST-6
14 pins		Solder version	3A(40°C)	60V	32V	Max.24AWG	Max.0.25	PUR/PVC	B16FSARHD14ST-6
19 pins		Solder version	3A(40°C)	60V	32V	Max.24AWG	Max.0.25	PUR/PVC	B16FSARHD19ST-6

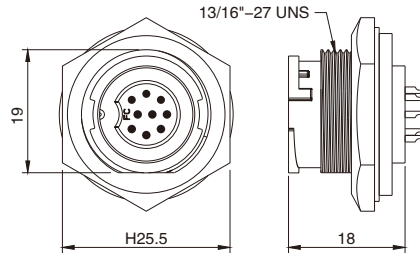
Remarks

- Please refer to Page 578 for the Conversion between American Wire Gauge AWG and Wire Cross-section mm².
- Please Refer to page 292 for products' part number encoding rule.

M16 Male Panel Mount, Straight, Quick-lock Type, Solder, Front fastened

- Connector series: M16
- Gender: Male
- Locking type: Quick-lock
- Mounting type: Front fastened
- Part No.: MB16MSAFQ**ST

** refers to pins number



General information



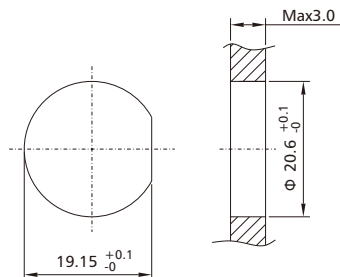
Ambient temperature:	-25°C ~ +90°C
Connector insert:	PA + GF
Connector contacts:	Brass with gold plated
Coupling nut/screw:	PA+GF
Seal / O-ring:	Epoxy resin / FKM

Insulation resistance:	≥ 100MΩ
Contact resistance :	≤ 5mΩ
Shielding:	Unavailable
IP rating:	IP65, IP67 in locked condition
Mating endurance:	>100 cycles

Electrical data & Mechanical data

Contacts	Contact termination	Rated current	Voltage		Wire gauge / size		Wire insulation	Part No.	
			A/C	D/C	AWG	mm ²			
08 pins		Solder version	4A	250V	300V	22AWG	0.34	PVC wire or customized	MB16MSAFQ08ST
09 pins		Solder version	4A	250V	300V	22AWG	0.34	PVC wire or customized	MB16MSAFQ09ST

Panel Cut-out Dimensions



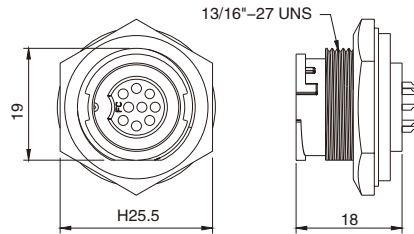
Remarks

- Please refer to Page 578 for the Conversion between American Wire Gauge AWG and Wire Cross-section mm².
- Please Refer to page 292 for products' part number encoding rule.

M16 Female Panel Mount, Quick-lock Type, Solder, Front fastened

- Connector series: M16
- Gender: Female
- Locking type: Quick-lock
- Mounting type: Front fastened
- Part No.: MB16FSAFQ**ST

** refers to pins number



General information

RoHS

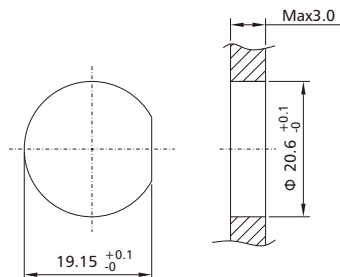
Ambient temperature:	-25°C ~ +90°C
Connector insert:	PA + GF
Connector contacts:	Brass with gold plated
Coupling nut/screw:	PA+GF
Seal / O-ring:	Epoxy resin / FKM

Insulation resistance:	≥ 100MΩ
Contact resistance :	≤ 5mΩ
Shielding:	Unavailable
IP rating:	IP65, IP67 in locked condition
Mating endurance:	>100 cycles

Electrical data & Mechanical data

Contacts	Contact termination	Rated current	Voltage		Wire gauge / size		Wire insulation	Part No.	
			A/C	D/C	AWG	mm ²			
08 pins		Solder version	4A	250V	300V	22AWG	0.34	PVC wire or customized	MB16FSAFQ08ST
09 pins		Solder version	4A	250V	300V	22AWG	0.34	PVC wire or customized	MB16FSAFQ09ST

Panel Cut-out Dimensions



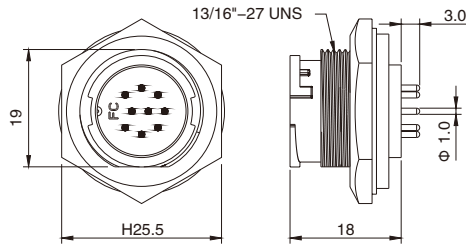
Remarks

- Please refer to Page 578 for the Conversion between American Wire Gauge AWG and Wire Cross-section mm².
- Please Refer to page 292 for products' part number encoding rule.

M16 Male Panel Mount, Quick-lock Type, PCB Type, Front fastened

- Connector series: M16
- Gender: Male
- Locking type: Quick-lock
- Mounting type: Front fastened
- Part No.: MB16MBAFQ**ST

** refers to pins number



General information

RoHS

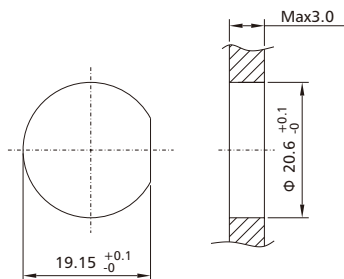
Ambient temperature:	-25°C ~ +90°C
Connector insert:	PA + GF
Connector contacts:	Brass with gold plated
Coupling nut/screw:	PA+GF
Seal / O-ring:	Epoxy resin / FKM

Insulation resistance:	≥ 100MΩ
Contact resistance :	≤ 5mΩ
Shielding:	Unavailable
IP rating:	IP65, IP67 in locked condition
Mating endurance:	>100 cycles

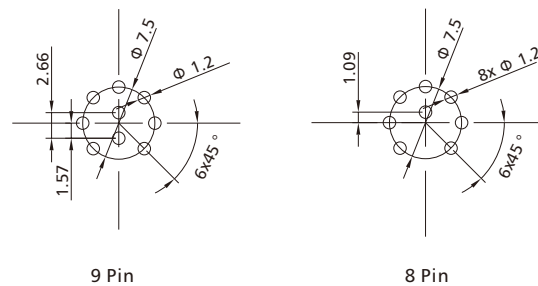
Electrical data & Mechanical data

Contacts	Contact termination	Rated current	Voltage		Part No.	
			A/C	D/C		
08 pins		PCB version	4A	250V	300V	MB16MBAFQ08ST
09 pins		PCB version	4A	250V	300V	MB16MBAFQ09ST

Panel Cut-out Dimensions



PCB Layout



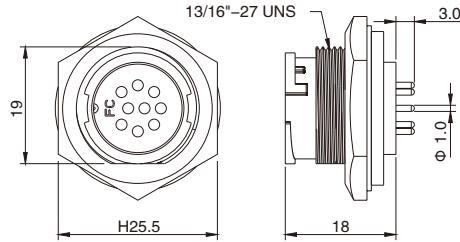
Remarks

- Please Refer to page 292 for products' part number encoding rule.

M16 Female Panel Mount, Quick-lock Type, PCB Type, Front fastened

- Connector series: M16
- Gender: Female
- Locking type: Quick-lock
- Mounting type: Front fastened
- Part No.: MB16FBAFQ**ST

** refers to pins number



General information

RoHS

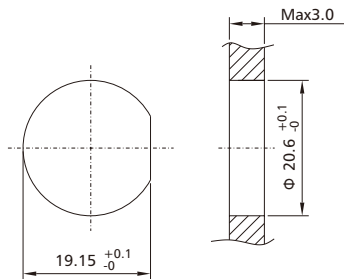
Ambient temperature:	-25°C ~ +90°C
Connector insert:	PA + GF
Connector contacts:	Brass with gold plated
Coupling nut/screw:	PA+GF
Seal / O-ring:	Epoxy resin / FKM

Insulation resistance:	≥ 100MΩ
Contact resistance :	≤ 5mΩ
Shielding:	Unavailable
IP rating:	IP65, IP67 in locked condition
Mating endurance:	>100 cycles

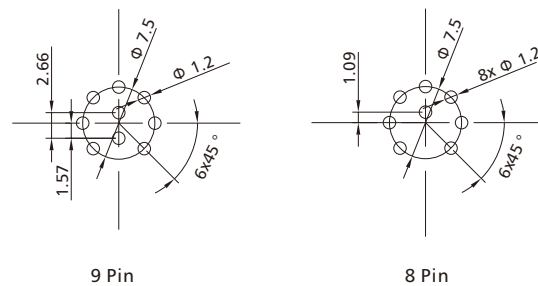
Electrical data & Mechanical data

Contacts	Contact termination	Rated current	Voltage		Part No.
			A/C	D/C	
08 pins	PCB version	4A	250V	300V	MB16FBAFQ08ST
09 pins	PCB version	4A	250V	300V	MB16FBAFQ09ST

Panel Cut-out Dimensions



PCB Layout



Remarks

- Please Refer to page 292 for products' part number encoding rule.